

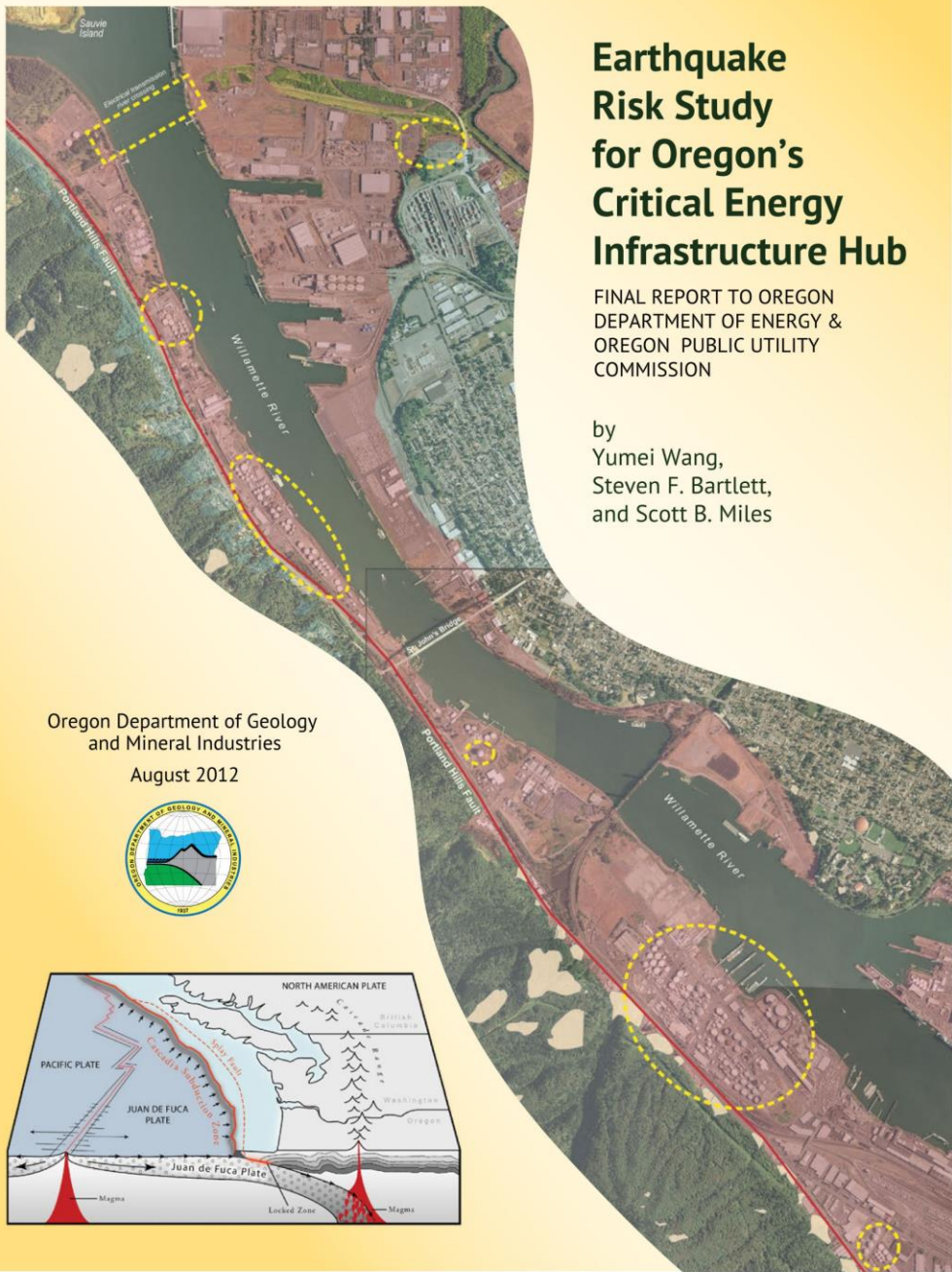
Oregon Context: The Threats to Energy Security

National Governors Association
Improving Resilience in the State of Oregon

YUMEI WANG, OREGON DEPARTMENT OF GEOLOGY AND MINERAL INDUSTRIES
DECEMBER 11, 2018

Natural Hazards





Earthquake Risk Study for Oregon's Critical Energy Infrastructure Hub

FINAL REPORT TO OREGON DEPARTMENT OF ENERGY & OREGON PUBLIC UTILITY COMMISSION

by Yumei Wang, Steven F. Bartlett, and Scott B. Miles

Oregon Department of Geology and Mineral Industries
August 2012

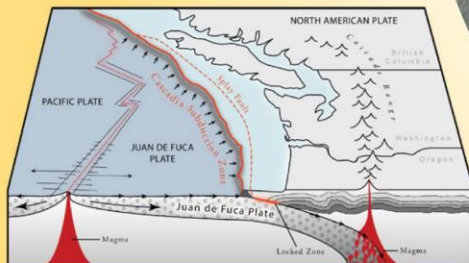


Photo: Y Wang



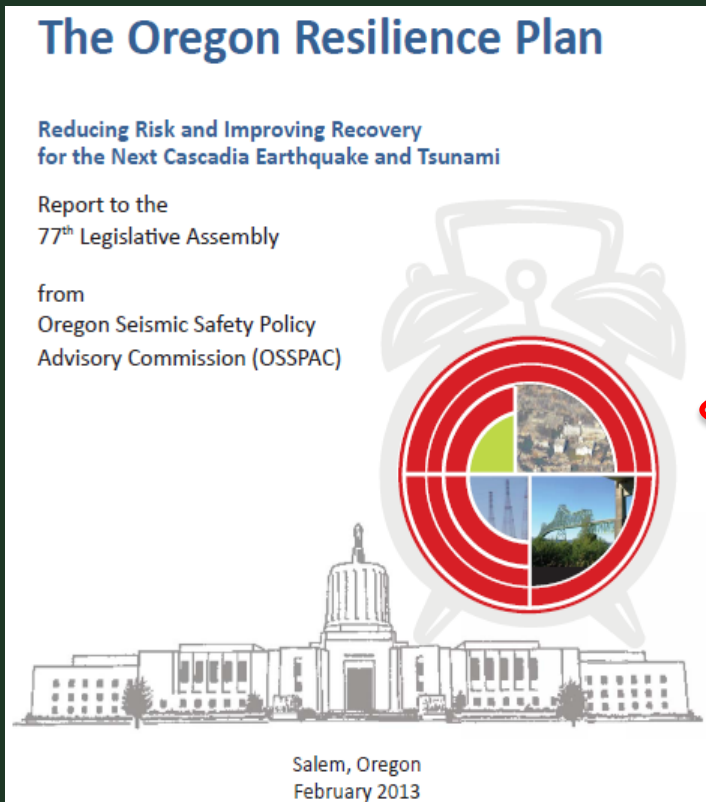
Photo: Y Wang

2013 Oregon Risk Study on Critical Energy Infrastructure
<http://www.oregongeology.org/pubs/ofr/p-O-13-09.htm>



IMPACTS: Widespread and Long Term

Cascadia poses a “black sky” hazard



Critical Services	Coast (months)	Valley (months)
Fuel	No Info	No Info
Water	36+	6-12
Wastewater	36+	36+
Electricity	3-6	1-3
Highway (Tier 1)	12-36	12-36
Communication	6-12	6-12
Schools	18	18
Fire	36+	2
Police	36+	4
Healthcare	36+	18

Source: OSSPAC

www.oregon.gov/gov/policy/orr/Documents/Oregon_Resilience_Plan_Final.pdf



Electrical System Vulnerabilities

Shaking, landslides, and liquefaction hazards



Sources: 1999 İzmit Earthquake (Turkey)
UC Irvine CUREE archives
<http://vis.eng.uci.edu/~curee/e3/?C=S;O=D>
and Chile TCLEE team



Oregon's Fuel Supply Chain Scenario

- Transmission pipeline breaks
- Shipping channel closes
Columbia River mouth tsunami damage. Channel slope failure
- Bridges, gas pipelines and electrical river crossings block navigable waterway
- Delivering fuel from east or south and by air are very limited
- Prolonged fuel shortage for post-disaster response and recovery



Critical Infrastructure Interdependencies

To restore electricity, need to reopen roads



Source: ASCE TCLEE members

To restore water service, need electricity



Source: www.public-domain-image.com

To restore fuel supplies, need electricity



To reopen roads, need to restore fuel supplies



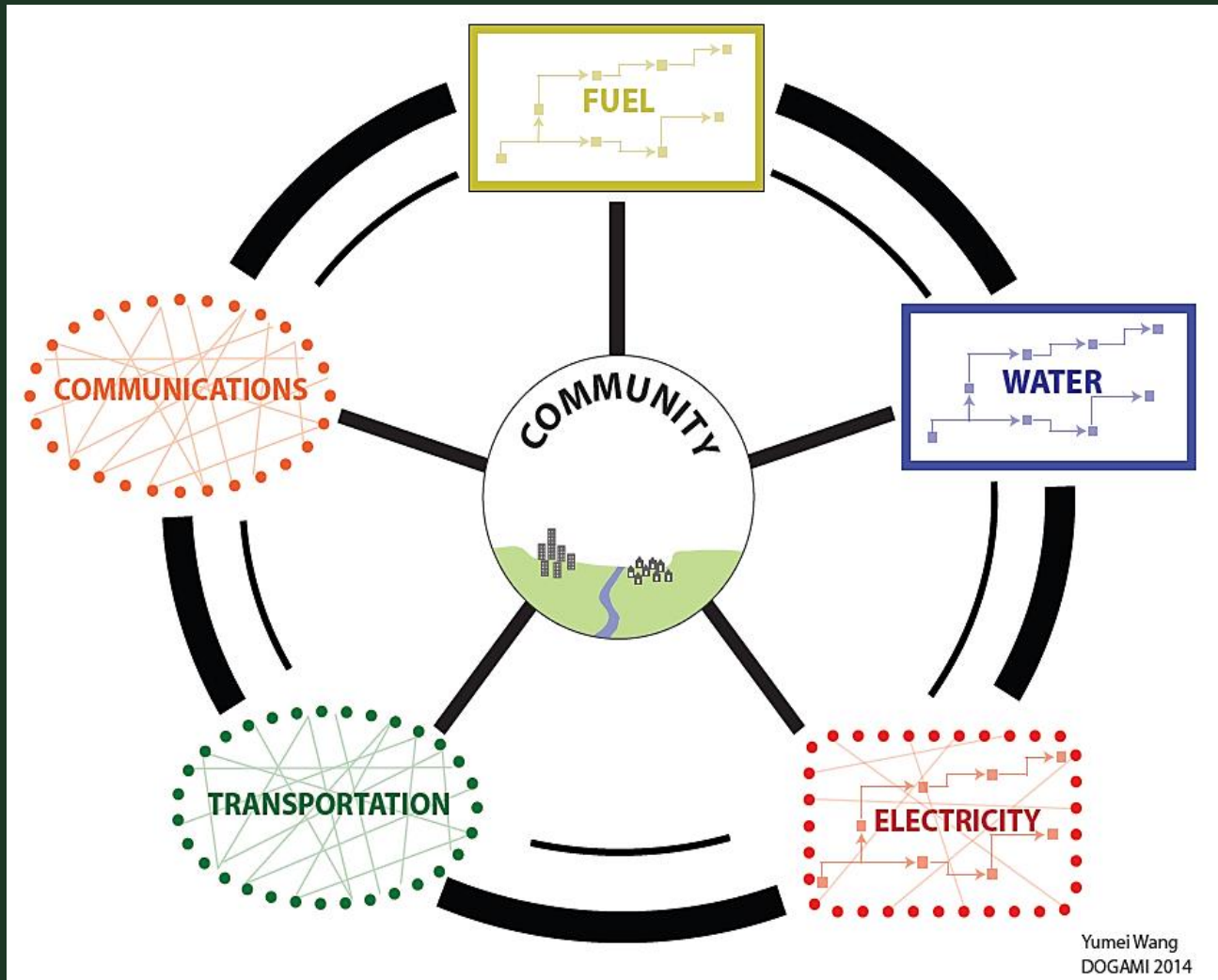
Source: ASCE TCLEE members

Credit: AP

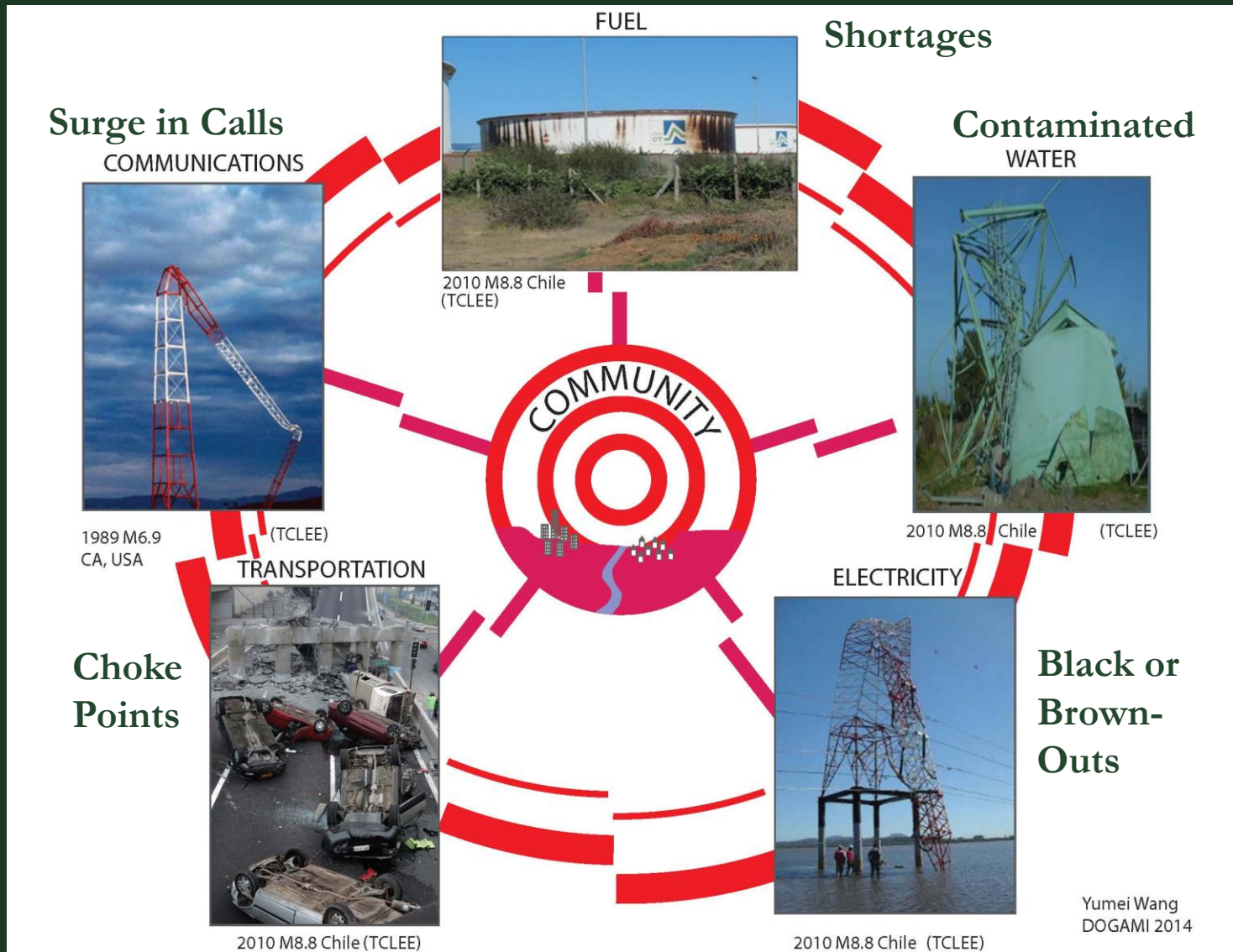
Yumei Wang, DOGAMI, 2018



Lifeline Systems “at a glance”



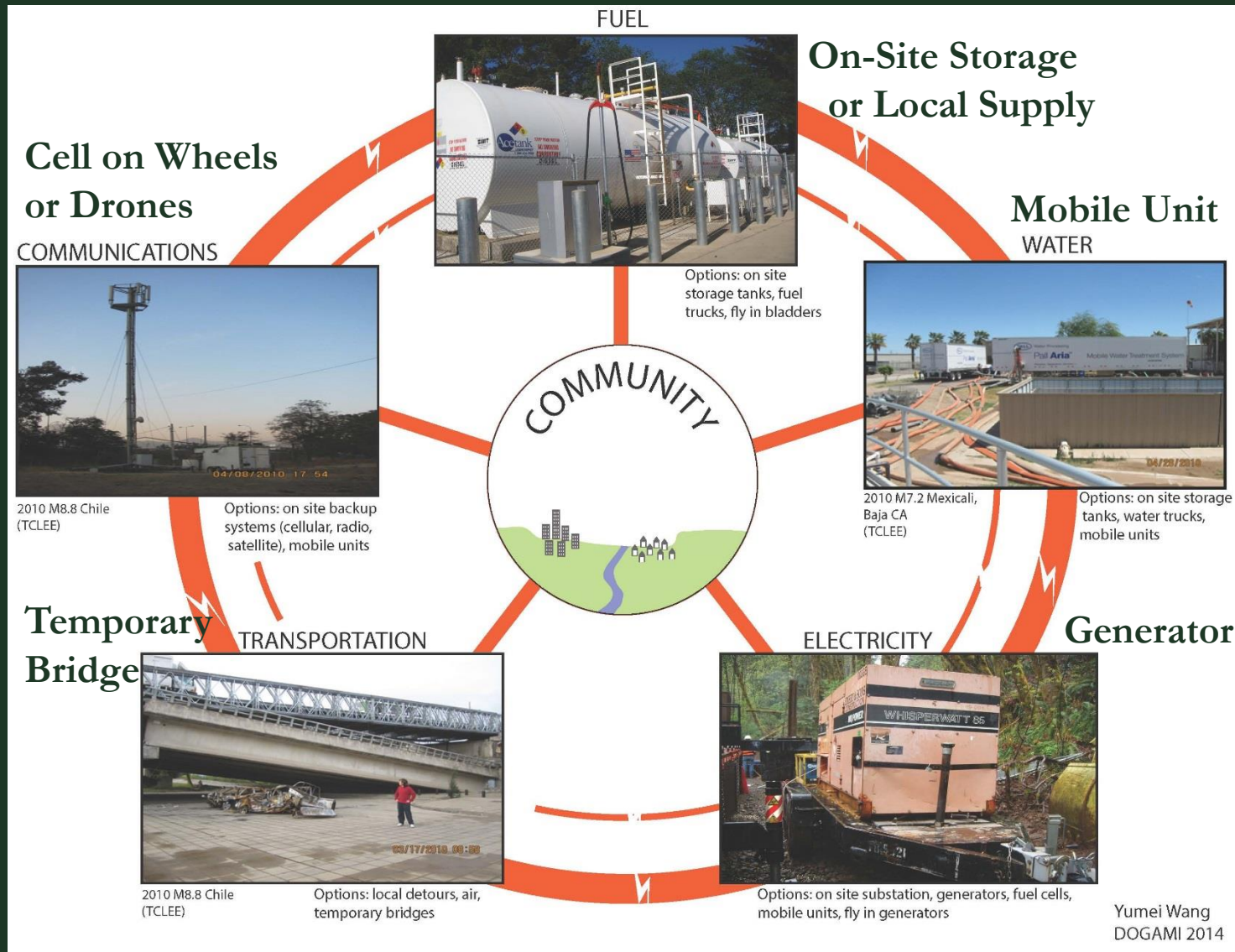
Lifelines During Disaster Conditions



Yumei Wang
DOGAMI 2014

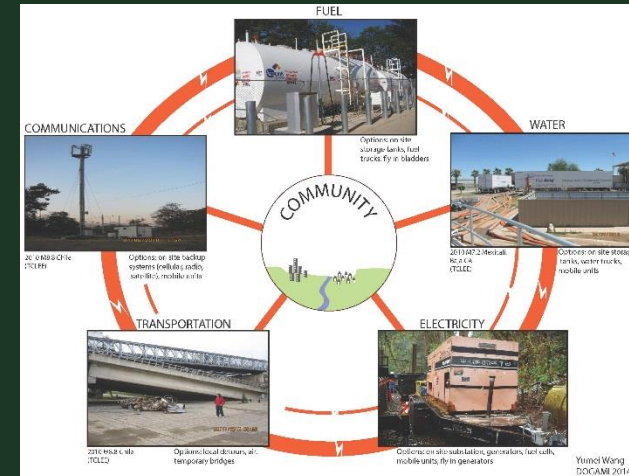
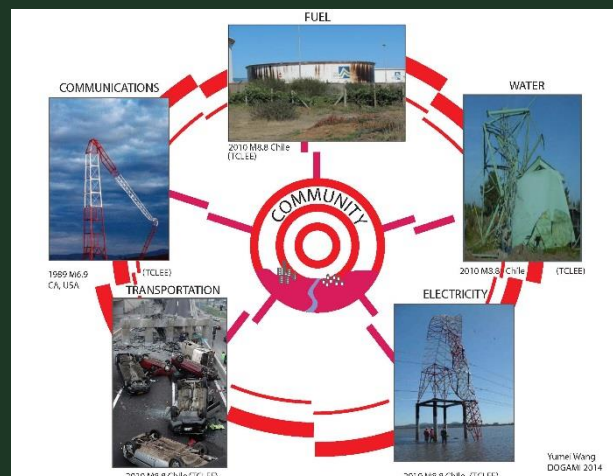
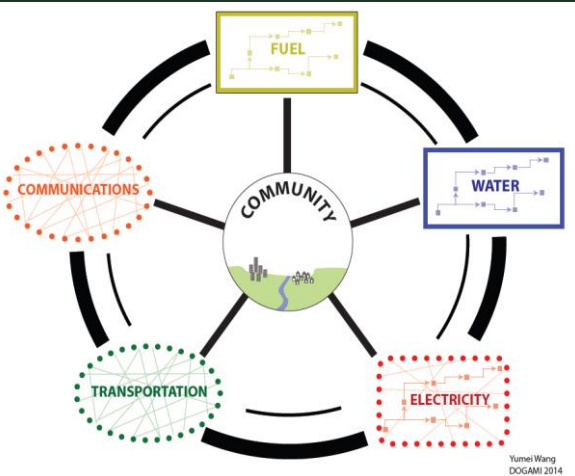


Options During Emergency Response Conditions



Lifelines

Before, During and After Disasters



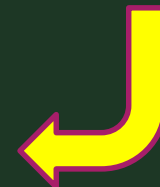
Normal
Conditions



Disaster Conditions



Emergency Response
Conditions



Thank you!

