



*July 20th, 2022*

# Human Services Policy Advisors Institute

---

**Whole Family Well-Being:  
Upstream Home Visiting**



# Housekeeping Items

## MEETING IS NOT FOR ATTRIBUTION

During this meeting we hope to generate a frank and open dialogue. For that reason, our discussion today is closed door and not for attribution.

---

## CHAT IS OPEN

Please leverage the chat functionality to share materials, ask questions, provide feedback, etc.

---

## CONTACT FOR TECHNICAL HELP

For technical issues, please chat or email Mackenzi Matthews – [mmatthews@nga.org](mailto:mmatthews@nga.org)

---

## INCLUDE STATE IN NAME

Please re-name yourself to include your name and state (John, DE)



# Agenda

---

New & Emerging Issues

---

Oregon

---

Ohio

---

Open Discussion: Q&A

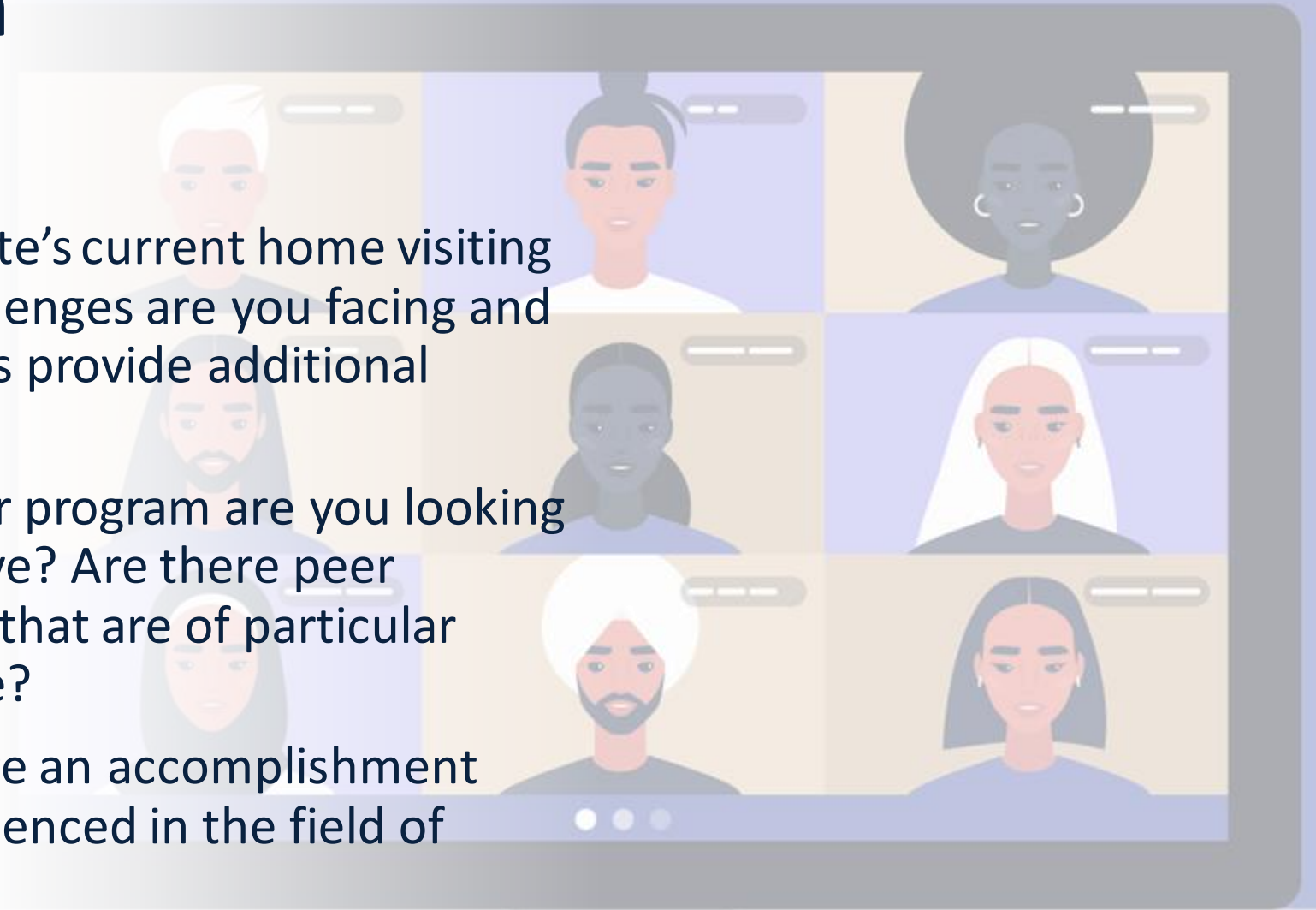
# New & Emerging Issues

A group of people are gathered in a meeting room with large windows. A woman in a blue blazer is standing and pointing to a whiteboard, while others are seated around a table, listening attentively. The whiteboard has handwritten notes including 'MEETING TODAY', 'SUMMER VACATION', and 'WEEKLY AGENDA'.

Small Group Discussion on Home Visiting Services in your State

# Breakout Room Questions

1. Considering your state's current home visiting programs, what challenges are you facing and where can Governors provide additional support?
2. What aspects of your program are you looking to develop or improve? Are there peer programs or models that are of particular interest to your state?
3. Humble Brags – Share an accomplishment your state has experienced in the field of home visiting.





Today's topic:

# Whole Family Well-Being: Upstream Home Visiting



# Oregon

**Cate Wilcox**

*Maternal & Child Health Manager, Public Health Division, Oregon Health Authority*



NATIONAL  
**GOVERNORS**  
ASSOCIATION

---

# Oregon Universally Offered Home Visiting (UoHV) Initiative: Family Connects Oregon

NGA HSPA1

July 20, 2022

Cate Wilcox, MPH

Maternal and Child Health Manager

Public Health Division

The logo for the Oregon Health Authority. It features the word "Oregon" in a smaller, orange, serif font positioned above the word "Health", which is in a large, dark blue, serif font. Below "Health" is the word "Authority" in a smaller, orange, serif font. The entire logo is set against a light blue, curved background that spans the width of the slide.

Oregon  
Health  
Authority



# Oregon Universally offered Home Visiting Initiative

- Vision** An initiative to strengthen families by offering a voluntary home visit by a nurse shortly after the birth of every child.
- Why?** The birth of a child is a big change for **any** family, and most families welcome and need support of some kind. This creates a universal, non-stigmatized touchpoint with families of newborns, including those adopted or fostered
- Who?** Champion: Senator Elizabeth Steiner Hayward, MD  
State focus on upstream prevention for children and families
- What?** SB 526: OHA to develop, implement, sustain universally offered home visiting for all families of newborns; commercial health benefit plans required to cover this service.

# UoHV Initiative Early Adopter Cohort Communities

The Early Adopter Cohort Communities are led by the following agencies:

- ✓ Clatsop County Public Health
- ✓ Early Learning Hub Linn, Benton, & Lincoln Counties at Linn-Benton College
- ✓ Early Learning Hub of Central Oregon (High Desert ESD)
- ✓ Eastern Oregon Early Learning Hub
- ✓ Four Rivers Early Learning and Parenting Hub
- ✓ Lane County Public Health
- ✓ Marion and Polk Early Learning Hub, Inc.
- ✓ Washington County Public Health Division



# Funding

- Vision: create a sustainability at the local level through reimbursements
- State General Fund: supports state level infrastructure (staff), contracts, local start-up funding, and Medicaid match
- Medicaid: Currently a carve out FFS, 2-part reimbursement
  - Medical services
  - Case Management (Targeted Case Management)
  - \$1056 total case rate
- Commercial Health Benefit Plans
  - Bundled case rate inclusive of all costs for implementing the model
  - Costs approximately \$1100-\$1300 per family served

# Partners

## State Level

- Medicaid
- Early Learning Division
- Early Learning Council
- Healthy Family Oregon
- MIECHV/Nurse HV
- Commercial Health Plans
- Division of Consumer and Business Services
- Legislature
- Schools of Nursing

## Local Level

- Local Public Health
- Early Learning Hubs
- Local Home Visiting
- Health Systems/Hospitals
- Local Systems of Care
- Help Me Grow/Unite Us

## National Level

- Family Connects International
- Pritzker Foundation

# Challenges and Opportunities

## Challenges

- Covid-19
- Lack of a planning period
- Staffing capacity within and across partners
- Working with commercial health plans was new
- Nursing workforce

## Opportunities

- Creating a system of care for all home visiting services to use
- Improved coordination among the home visiting models—creating a true HV system
- Elevate reimbursement for upstream prevention and SDoH—both for Medicaid and Commercial payors.

# Questions?

[oregon.uohv@state.or.us](mailto:oregon.uohv@state.or.us)

[cate.s.wilcox@state.or.us](mailto:cate.s.wilcox@state.or.us)



# Ohio



## Alicia Leatherman

*Administrator, Early Childhood Home Visiting and Maternal and Infant Wellness, Bureau of Maternal, Child and Family Health, Ohio Department of Health*



NATIONAL  
**GOVERNORS**  
ASSOCIATION

# Overview of Ohio's Home Visiting System

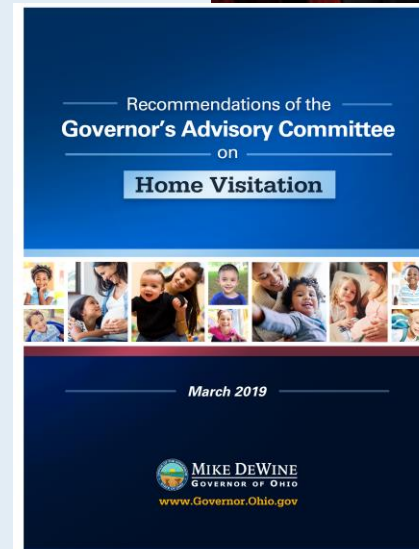
National Governors Association  
HSPA  
July 20, 2022



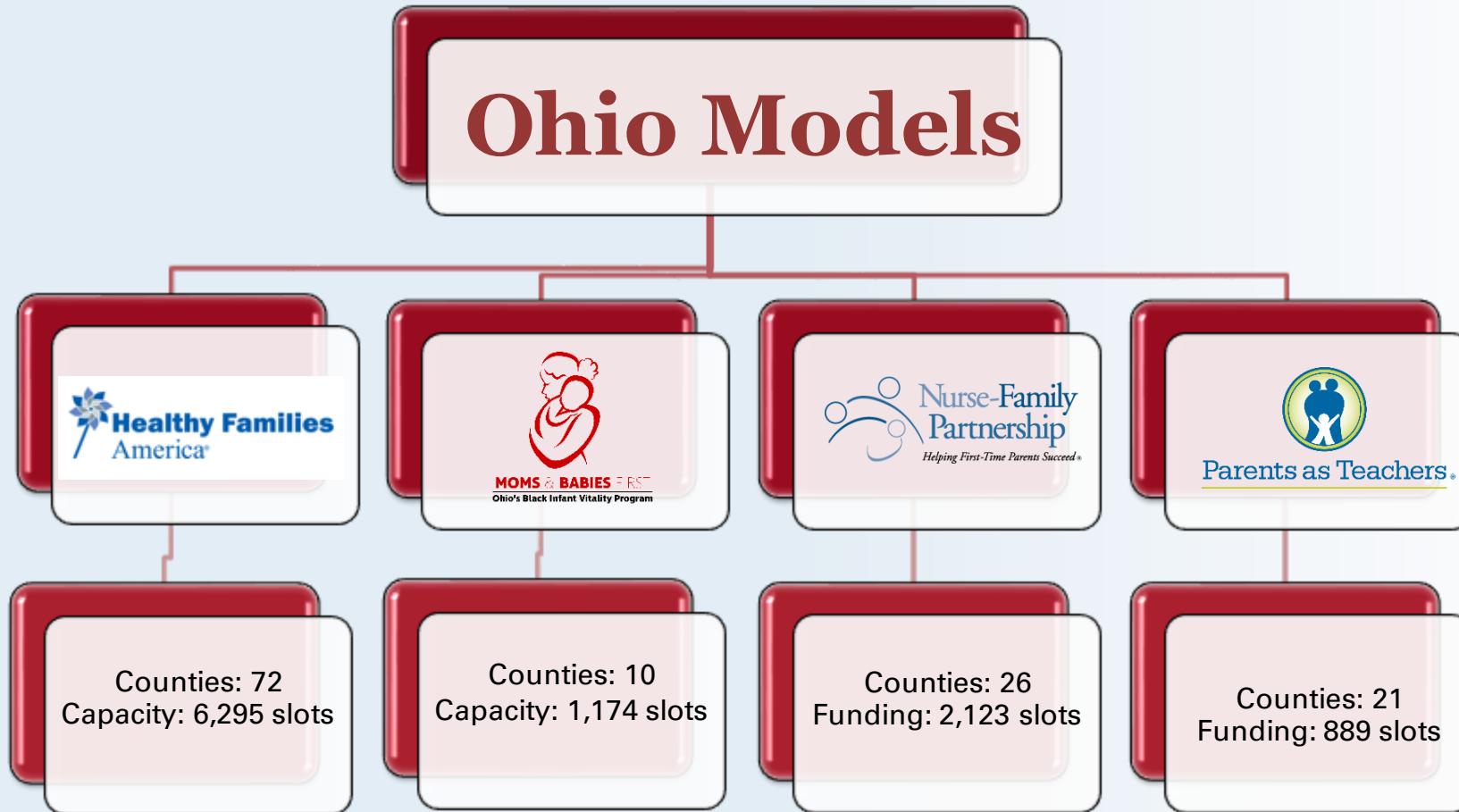


# Governor's Advisory Committee

- Created through Executive Order in January 2019
- Recommendations on how best to triple home visiting services
- 3 Subcommittees
  - Evaluation and Efficiency
  - Finance
  - Programming
- Report submitted in March with 20 recommendations



# Ohio Models



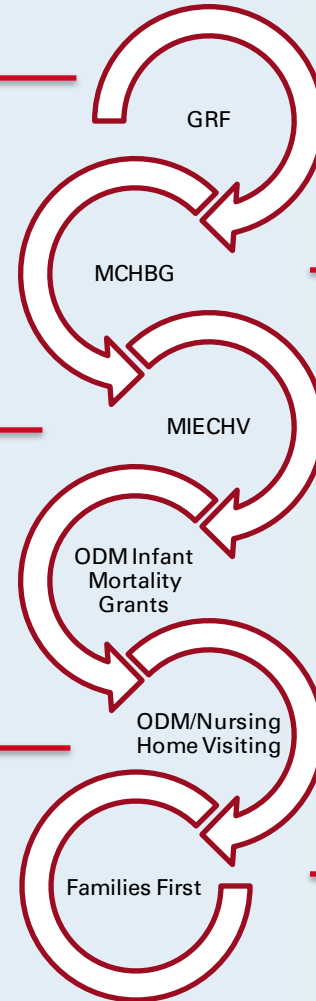
# Funding Streams

\$41.2 million  
HFA, MBF, NFP  
PAT

\$8.8 million  
HFA, NFP,  
PAT

Funding TBD  
NFP

HFA= Healthy Families America  
MBF= Moms & Babies First  
NFP= Nurse Family Partnership  
PAT= Parents As Teachers



\$2.2 million  
HFA, MBF, NFP  
PAT

\$3.0 million  
Expansion

Funding TBD  
HFA, PAT  
\$1.0 for expansion

# Partnerships/Expansion Funding

## Medicaid

- Leveraging state and federal Medicaid funding for services aligned to Nurse Family Partnership model
- Increased from 6 counties in 2020 to 26 counties

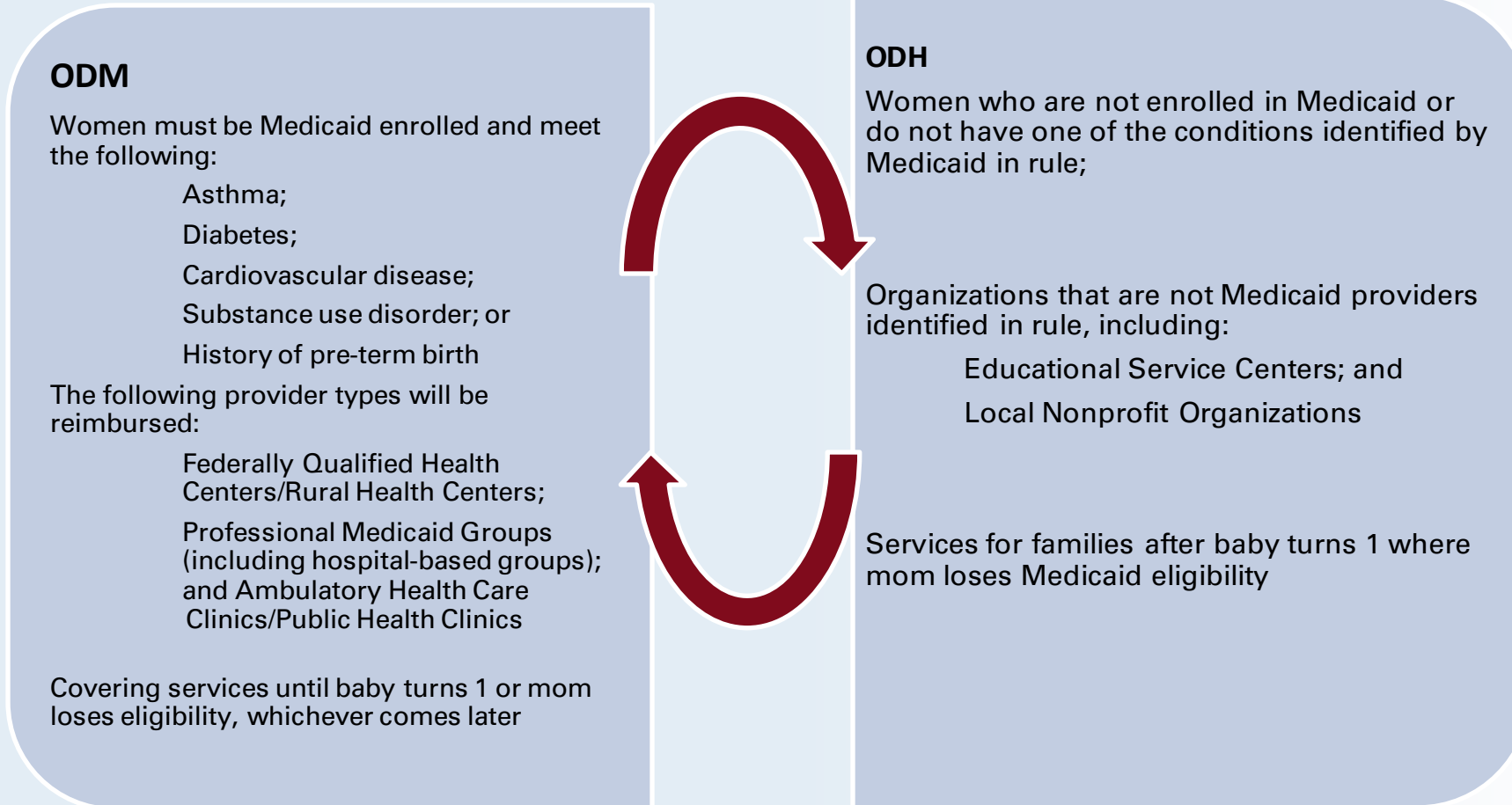
## Families First Prevention

- Leveraging federal funding for Healthy Families America and Parents as Teachers for prevention services referrals from local public children's services agencies

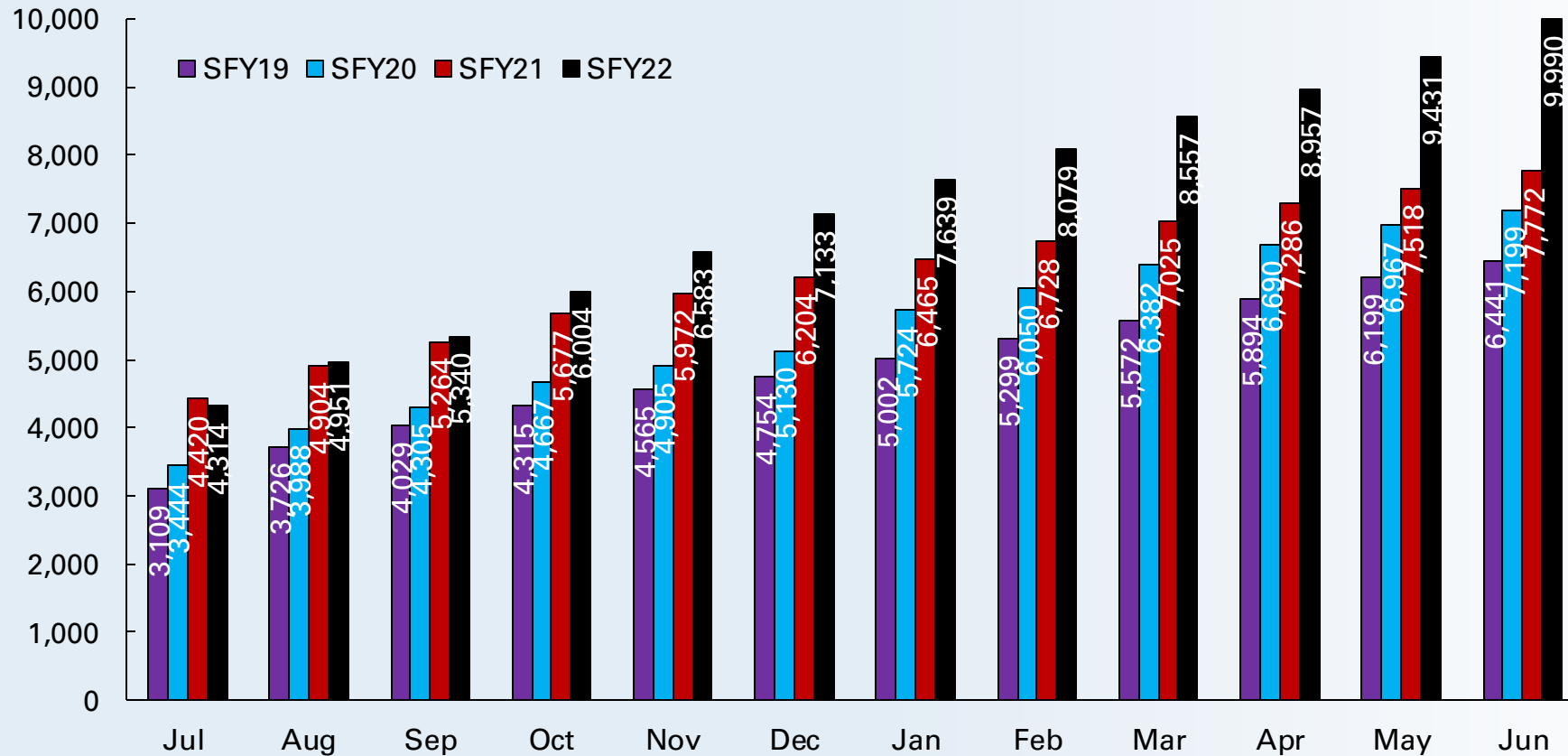
## Expansion Grants

- Leveraging state prevention services in partnership with ODJFS to provide expansion grants
- Awarded \$1.26 million to increase by approximately 850 slots

# Who's Funded by Which Funding Stream?



# Cumulative Enrollment: HMGHV Funding



# Questions/Resource

Alicia Leatherman

[Alicia.Leaherman@odh.ohio.gov](mailto:Alicia.Leaherman@odh.ohio.gov)

Recommendations of the Governor's Advisory  
Committee on Home Visitation

<https://governor.ohio.gov/media/news-and-media/030819>



**Open  
Discussion:  
Q&A**



# Announcements

[New Jersey Governor Phil Murphy Elected Chair Of NGA](#)

[Utah Governor Spencer Cox Elected Vice Chair](#)



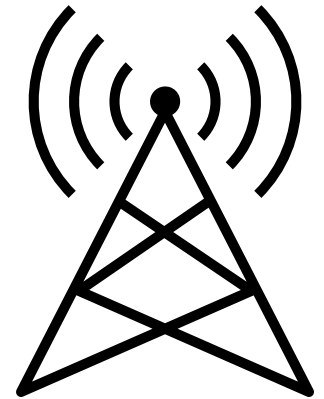
Transition of NGA Leadership & Introduction of the Chair's Initiative, ***Strengthening Youth Mental Health***

First Lady Tammy Snyder Murphy, First Spouses Initiative will focus on ***Maternal and Infant Health***



**2022 INSTITUTE  
HEALTH AND HUMAN SERVICES**

Wednesday, September 14th - Thursday, September 15th  
Greensboro, North Carolina





## Closing and Next Steps

# The Children and Families Team



**Jordan Hynes**

Policy Director

[Jhynes@nga.org](mailto:Jhynes@nga.org)



**Jessica Moise**

Senior Policy Analyst

[Jmoise@nga.org](mailto:Jmoise@nga.org)



**Jess Kirchner**

Policy Analyst

[Jkirchner@nga.org](mailto:Jkirchner@nga.org)



**Mackenzi Matthews**

Policy Coordinator

[Mmatthews@nga.org](mailto:Mmatthews@nga.org)

